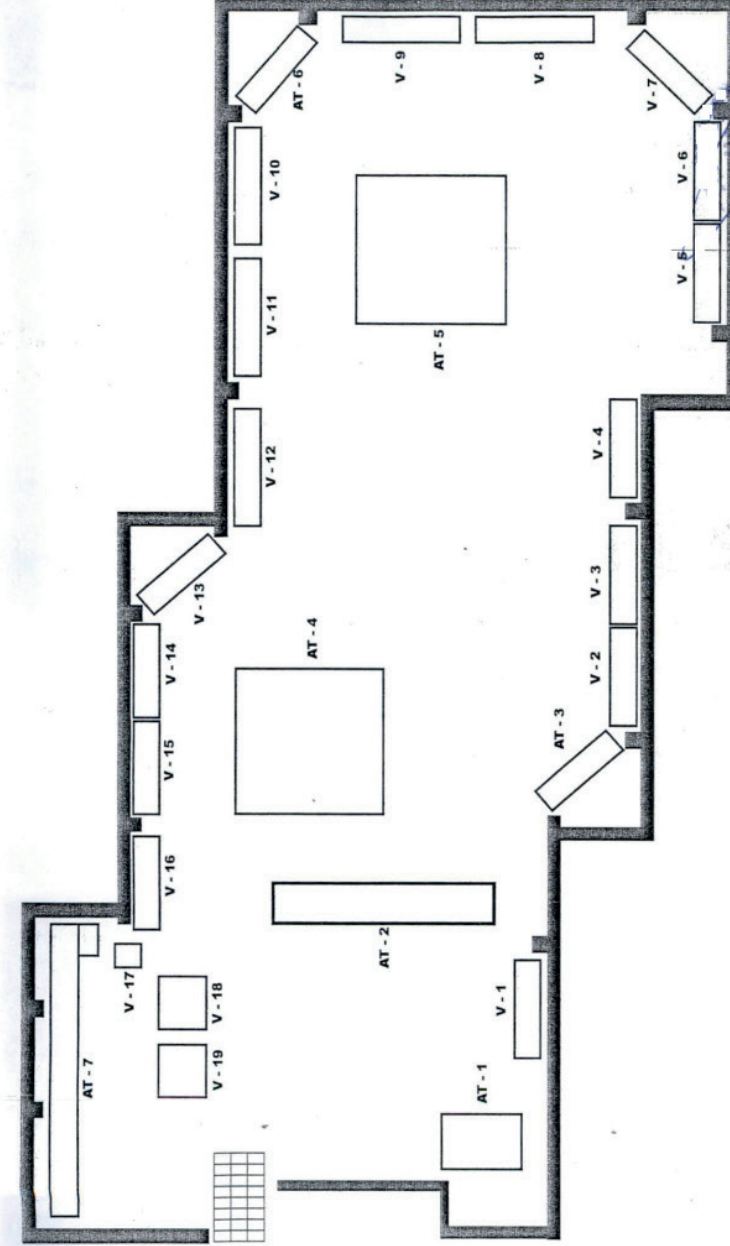


Ethnographic artefact exhibition hall TS-1



Archaeological artefact exhibition hall TS-1



Visiting Hours

Opening Time: 08:00
Closing Time: 17:00
Ticket Office Closing Time: 16:45

Open everyday.

Address: Türbe Sokak No: 1, 50100, Nevşehir

Please visit the web site for up-to-date information.

[f TurkishMuseums](#)
[i officialturkishmuseums](#)
[t TurkishMuseums](#)
[y TurkishMuseums](#)
[e TurkishMuseums](#)

www.turkishmuseums.com



www.muze.gov.tr



NEVŞEHİR MUSEUM

GENERAL DIRECTORATE FOR
CULTURAL ASSETS AND MUSEUMS





Nevşehir Kurugöl and Avanos Topaklı Höyük excavations unearthed Archaic and Hellenistic finds. These artefacts are lekythoi with black figures, plates, kylix, pyxis, and terracotta pots in the form of crater. Tear bottles in various forms, bracelets, glasses and beads from the Roman Period are among the important works of the collection. Terracotta wares, tear bottles, marble goddess head and Apollon statuette and oil lamps are also found from this period. In the section reserved for Byzantine Period, glass and bronze bracelets, bronze relics and works carved from mother-of-pearl are exhibited.



Artefacts from the Prehistoric Period originating from Mesopotamia and Cyprus were donated to the Nevşehir Museum. In the coin section of the museum, coins from Greek, Roman, Seljuk, and Ottoman periods, and the Spanish Ducas, which were found by chance in the town of Çat near Nevşehir, are exhibited. Folkloric artefacts of Nevşehir and its region, which are a part of Anatolian culture, are exhibited in this section in the Ethnographic Exhibition Hall.

In 1967, the Primary School and Soup Kitchen, which was a unit of Damat İbrahim Pasha Complex, was converted into a museum and opened to visitors. The museum moved to its new building in the cultural center in 1987.

Artefacts from Neolithic, Chalcolithic, Bronze Ages, Iron Age, Archaic, Hellenistic, Roman, Byzantine Periods and from Mesopotamia as well as bronze, silver and gold coins from various periods are exhibited in the archaeological exhibition hall.

